

IONIS

INDOOR AND OUTDOOR
ADVANCED
TECHNOLOGICAL
SOLUTION FOR PEOPLE
WITH DEMENTIA.

Assistance in the early
stages of dementia for
safe and independent
living at home.

Decrease the burden of families
caring for people with early-stage
dementia.

IONIS Project

Symptoms affecting people with dementia create an enormous challenge to healthcare and social support systems, as well as individual caregivers. IONIS aims at supporting older people with cognitive decline and their family members with solutions which can augment their safety and lower the risks of harmful events, as well as facilitate their active participation in life.

The project includes partners, universities, development companies and non-governmental organizations from Switzerland, Poland, Hungary, Romania and Slovenia, which enables high-end results and a valid and well-tested solution.

CONTACT

Angelo Consoli, ECLEXYS SAGL

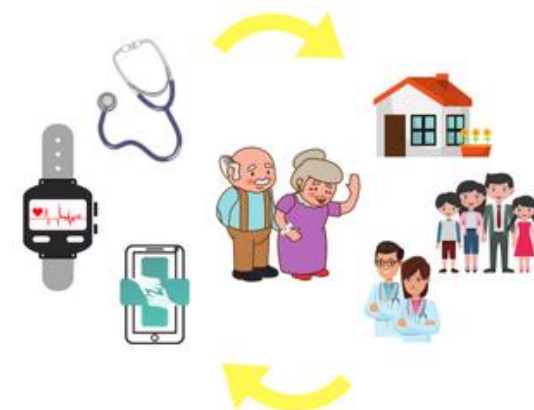
Via dell'Inglese 6, 6826 Riva San Vitale,
Switzerland

angelo.consoli@eclexys.com

Telephone number: +41 91 600 00 00

IONIS S

IONIS S is our first solution to help families caring for people with early-stage dementia. It is built up by a smartwatch and a gateway with smooth integration of health devices. On IONIS portal, you can set reminders, follow physical condition data, and track the location of your beloved person.



Know where your beloved is around the clock! Basic indoor localization, outdoor localization with geofencing.

Be informed in time if her/his physical condition is worsened! Physical condition monitoring devices can be seamlessly connected. Set reminders and alerts in the calendar.

Take advantage of health data at hand in conversations with doctors! Physical condition data is available for caregivers on IONIS Portal.



ZAVOD IZRIIS



We are going to launch new IONIS functions in succession:

IONIS M, 2023

Extension and improved version of IONIS S.
Improved and new features:

Improved indoor localization: Beyond activity level, you can also check in which room the person is. Improved precision of indoor localization enables wandering detection and alerts as well.

Integrated domotic sensors: A variety of domotic sensors can be seamlessly connected, devices can be purchased on demand.

Sleep monitoring: Follow quality of sleep, number of bed exists, and time in bed. Be informed when sleeping behavior changes.



IONIS M+, 2023

Extension of IONIS M. New feature:

Fall detection: Smart watch detects hard falls while you are wearing it. In case of fall, caregiver receives automatic notification on his mobile.

Turn home into a supportive environment by installed indoor localization features!

IONIS L, 2024

After the installation of anchors in the rooms, improved indoor localization features become available without smartwatch as well.

Installed indoor localization: You can check the exact location of the person at home. It also enables wandering detection and fall detection.

Object localization: Important objects like glasses and keys can be easily found by touching the icon on the IONIS screen. It triggers flashing and sound on the tag attached to the object.

Other features are available as in previous IONIS versions.



IONIS

INDOOR AND OUTDOOR ADVANCED TECHNOLOGICAL SOLUTION FOR PEOPLE WITH DEMENTIA.

**Assistance in the early
stages of dementia for
safe and independent
living at home.**

